

Mapping Tranquillity

Gerald Kells, CPRE West Midlands



Campaign to Protect
Rural England

Why tranquillity matters

- Public value
 - Health and quality of life
 - Economic development
 - Government policy
- (Rural White Paper 2000
Rural Strategy 2004
PPS1)

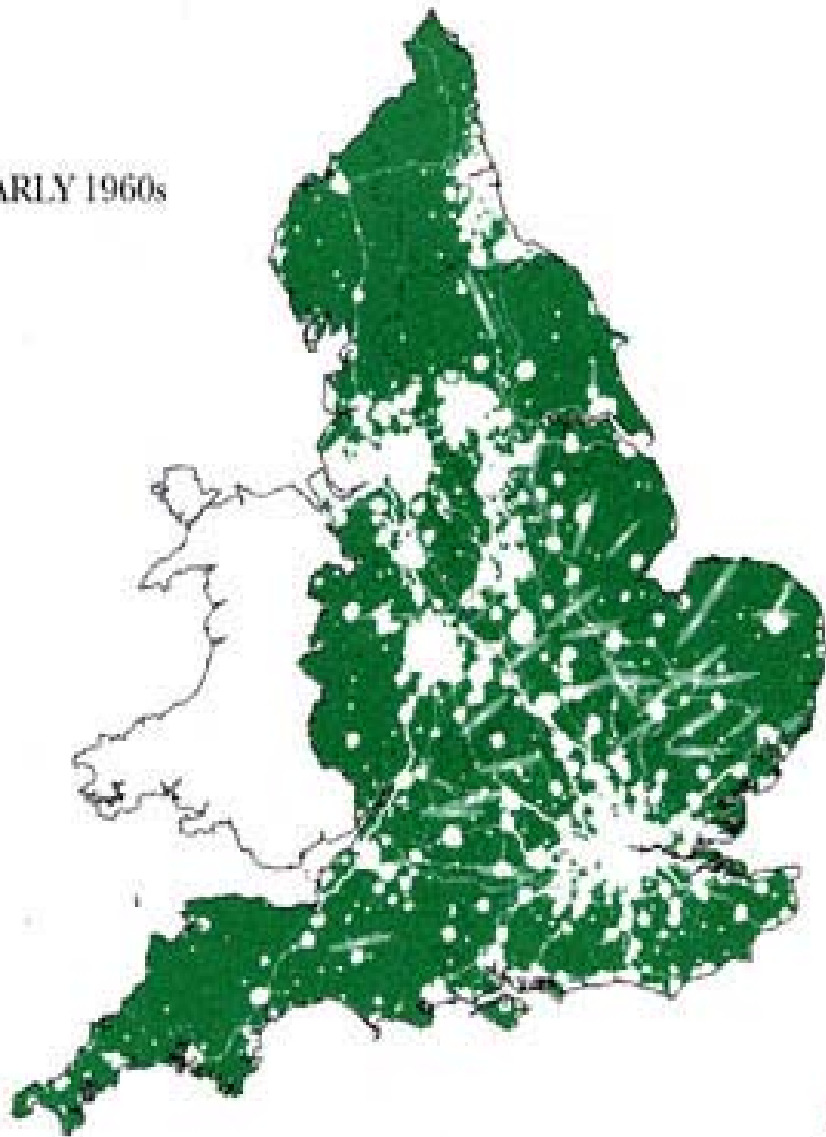


Threats to tranquillity

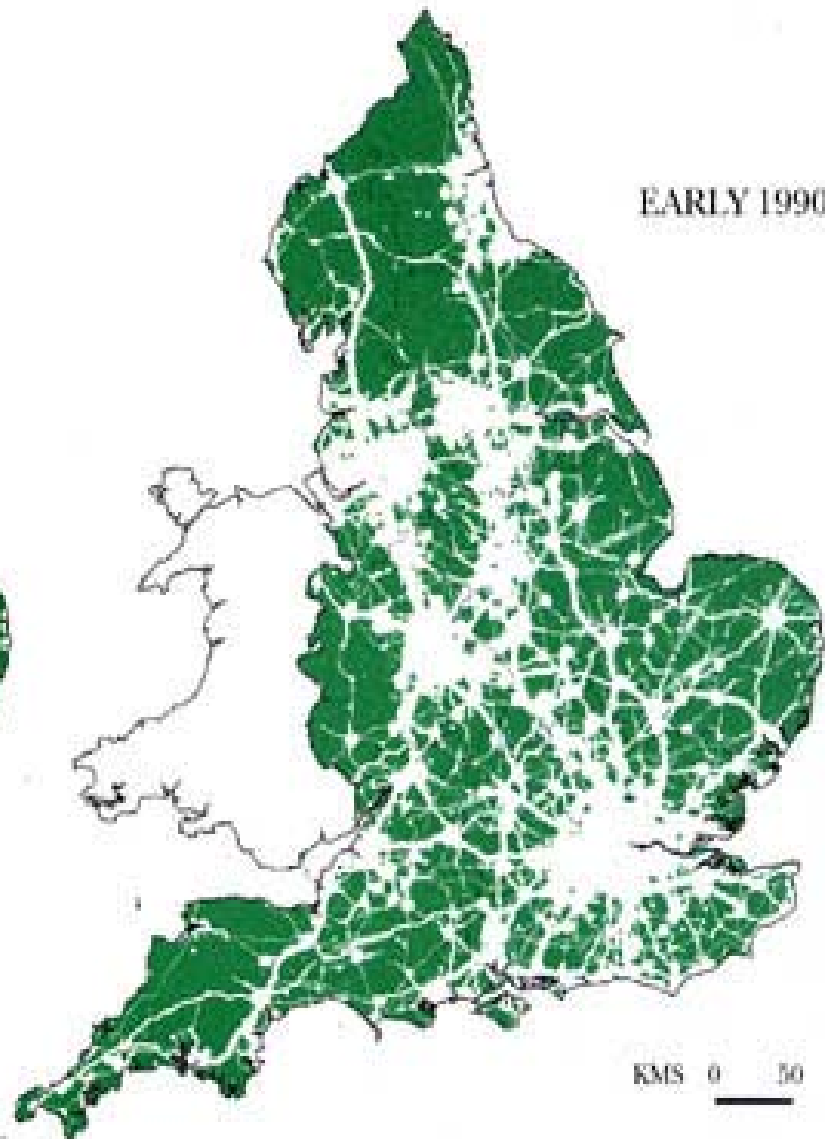
- Loss of countryside to new buildings and infrastructure
- Growing road traffic and expanding roads
- Increase in flights, flight paths and runways
- Increasing light pollution



EARLY 1960s



EARLY 1990s



KMS 0 50

CPRE's earlier 'Tranquil areas' maps



Tranquil areas

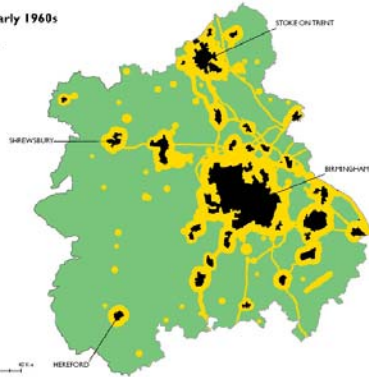


Tranquil areas with some intrusion / disturbance

Intrusion Maps

**Intrusion Map:
West Midlands Early 1960s**

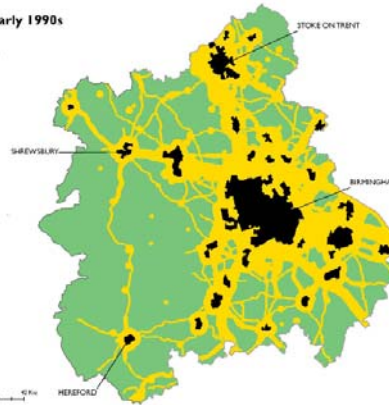
Key
 Areas demarcated by access & road intrusions*
 Undisturbed areas
 Urban areas



Original © CPRE & Countryside Commission 1965
 *Areas demarcated by the Birmingham, Liverpool and Manchester Metropolitan Councils and other authorities. All U.K. administration boundaries are reproduced from Ordnance Survey Information with the permission of The Controller of Her Majesty's Stationery Office, Crown Copyright, London, Ordnance Survey Licence 8000702

**Intrusion Map:
West Midlands Early 1990s**

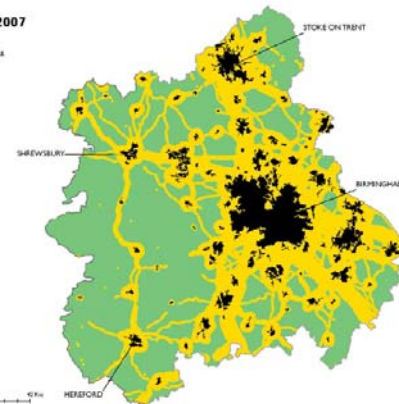
Key
 Areas demarcated by access & road intrusions*
 Undisturbed areas
 Urban areas



Original © CPRE & Countryside Commission 1991
 *Areas demarcated by the Birmingham, Liverpool and Manchester Metropolitan Councils and other authorities. All U.K. administration boundaries are reproduced from Ordnance Survey Information with the permission of The Controller of Her Majesty's Stationery Office, Crown Copyright, London, Ordnance Survey Licence 8000702

**Intrusion Map:
West Midlands 2007**

Key
 Areas demarcated by access & road intrusions*
 Undisturbed areas
 Urban areas



Original © CPRE & Countryside Commission 1991
 *Areas demarcated by the Birmingham, Liverpool and Manchester Metropolitan Councils and other authorities. All U.K. administration boundaries are reproduced from Ordnance Survey Information with the permission of The Controller of Her Majesty's Stationery Office, Crown Copyright, London, Ordnance Survey Licence 8000702



Campaign to Protect
Rural England

New method and maps – main features

- Extensive public consultation
- National survey
- Complex modelling / mapping of factors:
- National, regional and county maps



What tranquillity is and is not

Top 5 factors:

1. Seeing a natural landscape
2. Hearing birdsong
3. Hearing peace and quiet
4. Seeing natural looking woodland
5. Seeing the stars at night

Top 5 factors:

1. Hearing constant noise from road traffic
2. Seeing lots of people
3. Seeing urban development
4. Seeing overhead light pollution
5. Hearing lots of people



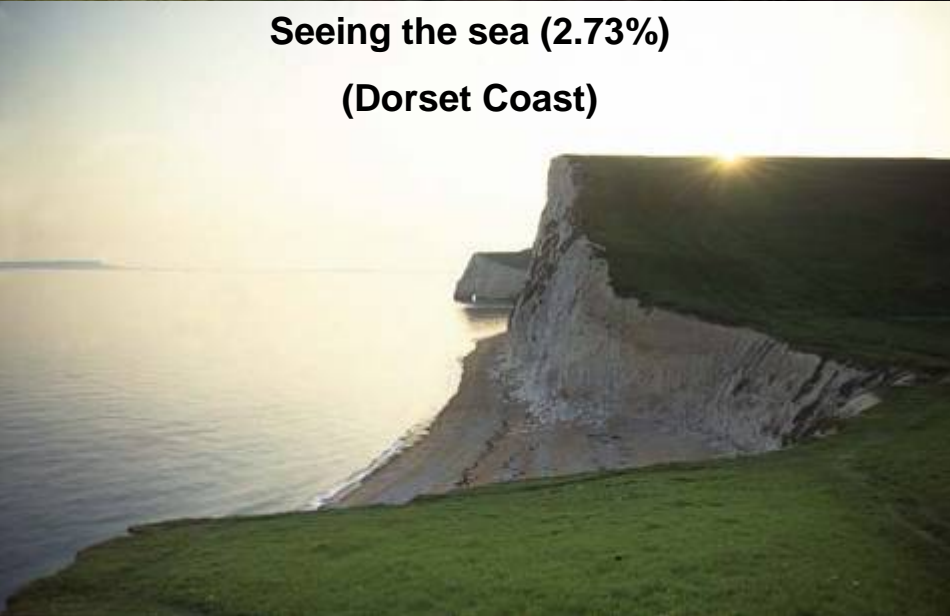
**Seeing a natural landscape (6.59%)
(Long Mynd, Shropshire)**



**Seeing rivers (2.18%), Hearing running water
(2.23%) (River Browney, Durham)**



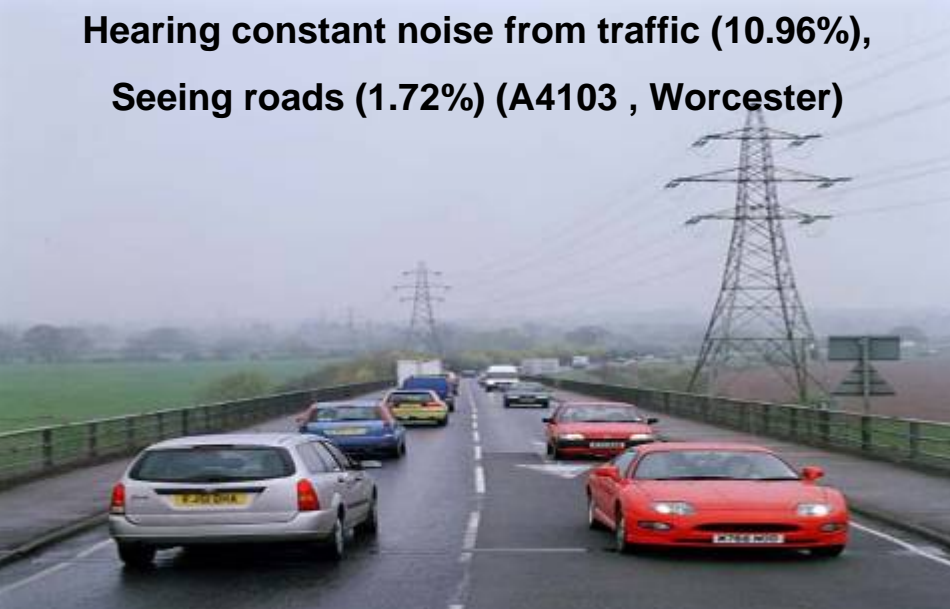
**Seeing the sea (2.73%)
(Dorset Coast)**



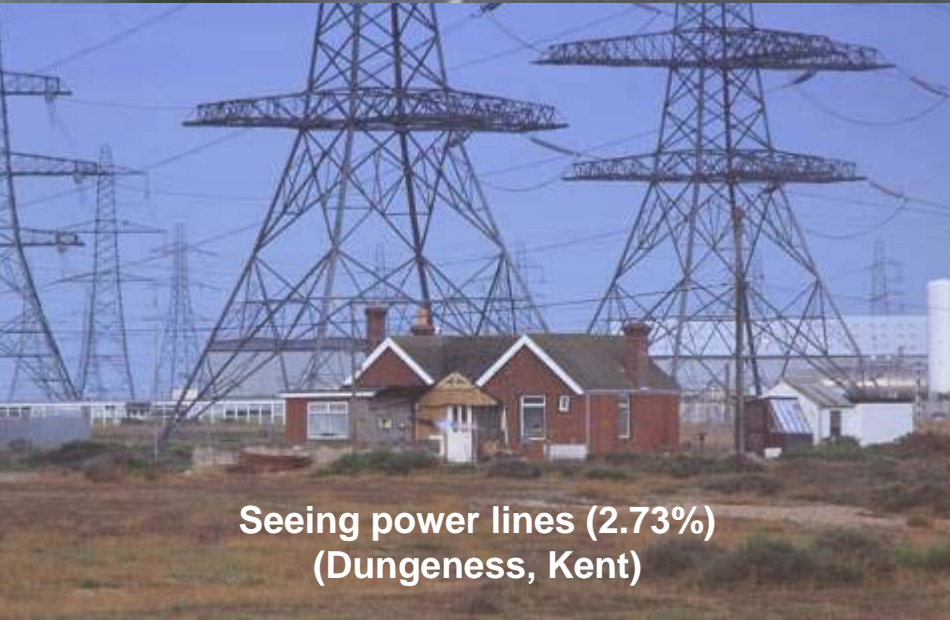
**Seeing wide open spaces (2.15%),
Seeing remote landscapes (1.40%)
(Mitredale, Lake District)**



**Hearing constant noise from traffic (10.96%),
Seeing roads (1.72%) (A4103 , Worcester)**



**Seeing urban development (4.62%)
(Magna Park, Leicestershire)**



**Seeing power lines (2.73%)
(Dungeness, Kent)**

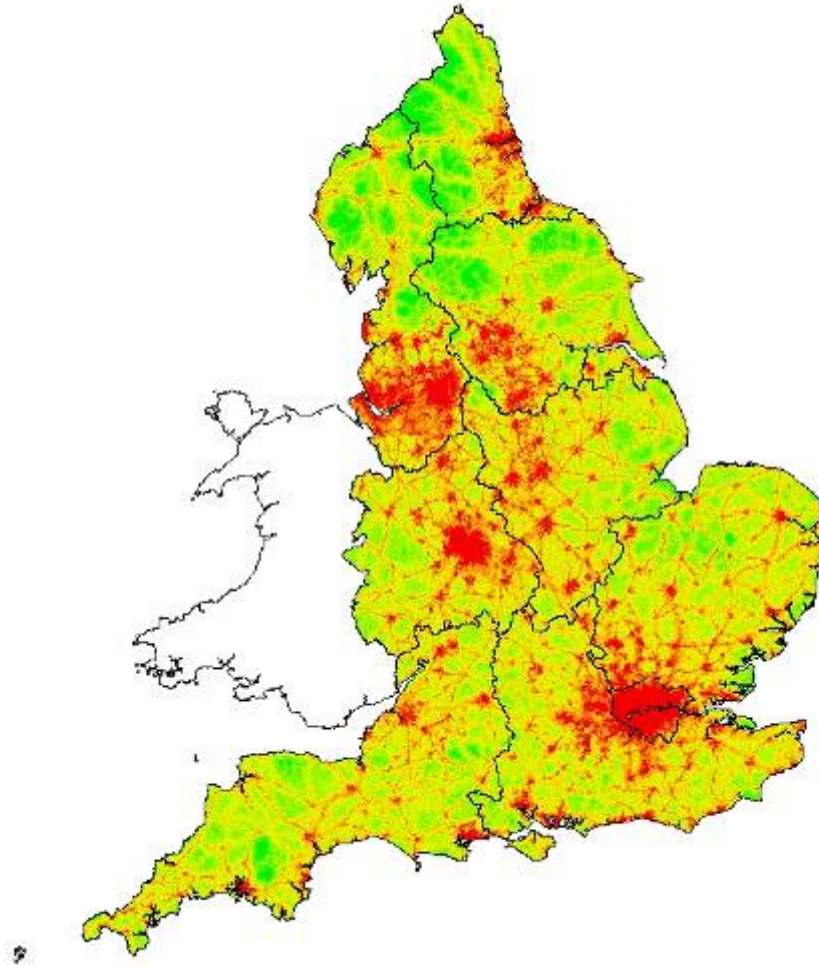


**Seeing towns and cities (2.50%)
(View to Brighton from Sussex Downs)**



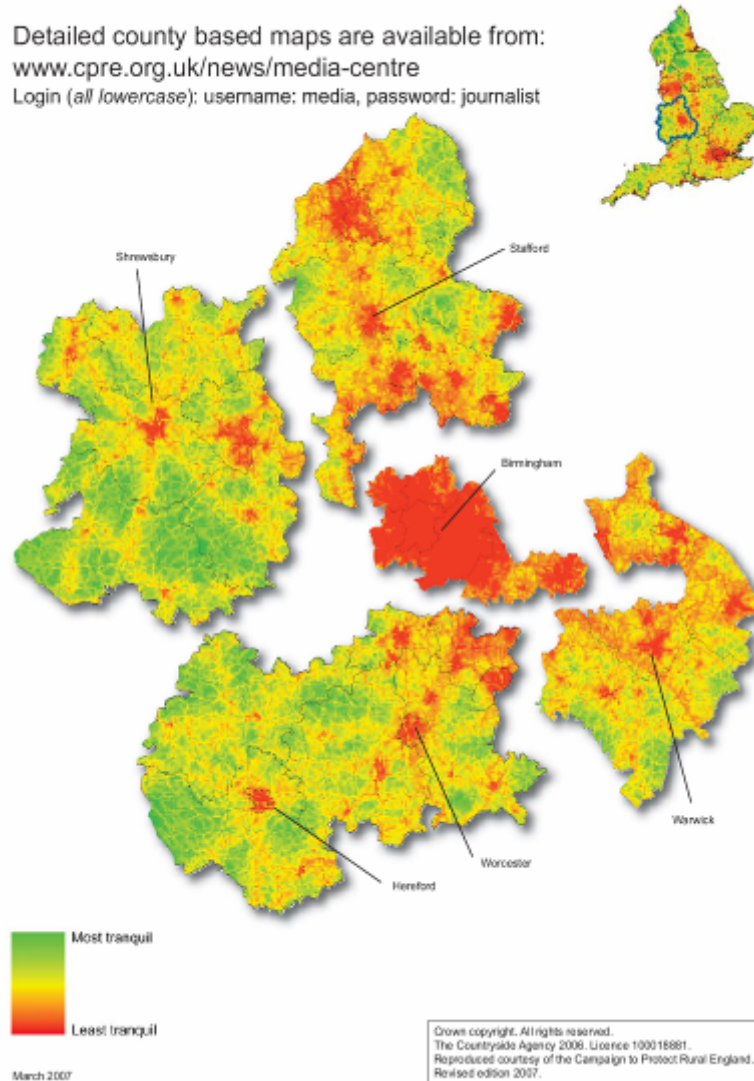
Campaign to Protect
Rural England

CPRE's new national tranquillity map

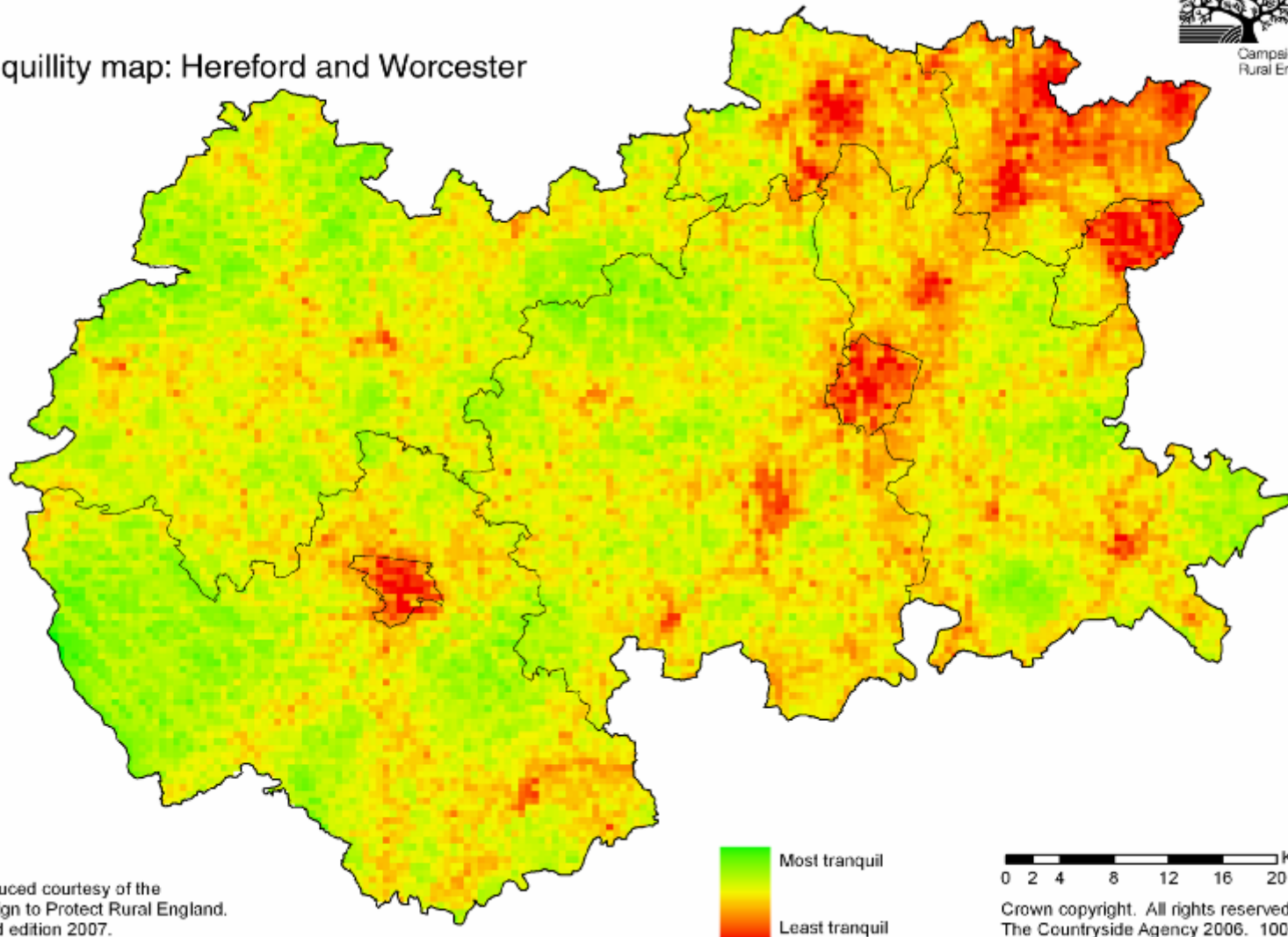


Tranquillity maps: West Midlands

Detailed county based maps are available from:
www.cpre.org.uk/news/media-centre
Login (all lowercase): username: media, password: journalist



Tranquillity map: Hereford and Worcester



Reproduced courtesy of the
Campaign to Protect Rural England.
Revised edition 2007.

0 2 4 8 12 16 20 Kilometres

Crown copyright. All rights reserved.
The Countryside Agency 2006. 100018881.



What the new maps and method do

- Combine people's experience with hard data
- Score tranquillity on a national scale for each grid square
- Model up to 42 positive and negative factors for each square
- Allow re-classing of data to produce regional / local maps down to a finer grain (50m x 50m)
- Can be rerun to provide an indicator of change
- Can model and map effects of urban growth, traffic growth or new roads



Policy Application

- **National Government** - should use this tranquillity methodology as a basis for including tranquillity in a measure of the quality of the countryside;
- **Regional Bodies** - should use the methodology when developing policies in spatial, transport and economic strategies;
- **Local Authorities**, including unitary and National Park authorities - should use the tool in undertaking their planning functions; and
- **County Councils and Unitary Authorities** - should take tranquillity into account in their local transport plans and mineral and waste development frameworks.



Regional Spatial Strategy

- Can be used to assess Growth Options in Phase 2
- Can inform Phase Three Revision
- Provides a methodology which can be adopted to test local authority's policies





*'YOU'VE GOT THE DAMN
TRANQUILLITY MAP
UPSIDE DOWN, YOU IDIOT'*



Campaign to Protect
Rural England

